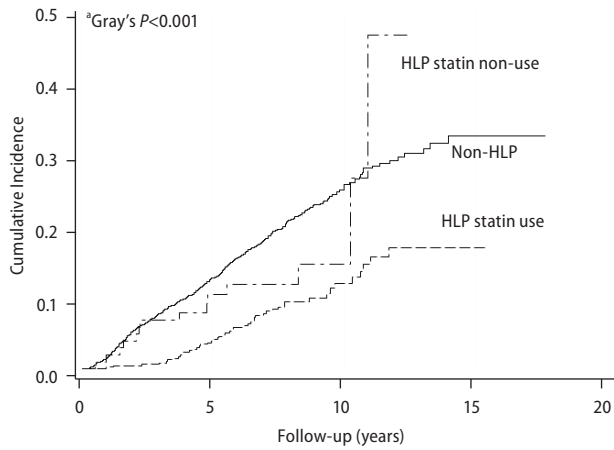


A The effects of DM with and without metformin for HCC risk after excluding 49 patients with eGFR < 30

Groups		BL	1Y	3Y	5Y	8Y	10Y	^b Crude SHR (95% CI) P-value	^{b*} Adjusted SHR (95% CI) P-value
DM metformin non-use	No. at risk	276	272	229	170	72	20	1.59 (1.22-2.08) P<0.001	1.56 (1.18-2.07) P=0.002
	Cumulative Incidence (%)		2.5	12.3	17.2	27.9	28.8		
DM metformin use	No. at risk	331	331	321	292	189	93	0.80 (0.62-1.05) P=0.106	0.94 (0.72-1.24) P=0.670
	Cumulative Incidence (%)		0.0	0.6	3.1	12.6	19.6		
Non-DM	No. at risk	2,123	2,029	1,854	1,420	683	261	1	1
	Cumulative Incidence (%)		1.6	6.6	11.4	17.9	21.7		

Supplementary Figure 4. The impact of DM with and without metformin (A) and HLP with and without statin (B) on the new-onset HCC after excluding 49 patients with eGFR <30 (n=2,730). (A) ^aAfter considering death as a competing risk, a Kaplan–Meier plot was constructed using Gray’s cumulative incidence method. ^bAll SHRs (95% CIs) and P-values were calculated using the Cox sub-distribution hazards method. ^{*}Adjusted for age, sex, LC, HCV GT1, HCV RNA, aspirin, and HLP/statin. DM, diabetes mellitus; HLP, hyperlipidemia; HCC, hepatocellular carcinoma; SHR, sub-distribution hazard ratio; LC, liver cirrhosis; GT, genotype. (B) ^aAfter considering death as a competing risk, a Kaplan–Meier plot was constructed using Gray’s cumulative incidence method. ^bAll SHRs (95% CIs) and P-values were calculated using the Cox sub-distribution hazards method. ^{*}Adjusted for age, sex, LC, HCV GT1, HCV RNA, aspirin, and DM/metformin. DM, diabetes mellitus; HLP, hyperlipidemia; HCC, hepatocellular carcinoma; SHR, sub-distribution hazard ratio; LC, liver cirrhosis; GT, genotype.



B The effects of HLP with and without statin for HCC risk after excluding 49 patients with $eGFR < 30$

Groups		BL	1Y	3Y	5Y	8Y	10Y	^b Crude SHR (95% CI) <i>P</i> -value	^{b*} Adjusted SHR (95% CI) <i>P</i> -value
HLP statin non-use	No. at risk	104	100	90	59	32.0	7	0.73 (0.43-1.25) <i>P</i> =0.252	0.68 (0.40-1.14) <i>P</i> =0.145
	Cumulative Incidence (%)		1.9	6.7	10.3	11.8	14.5		
HLP statin use	No. at risk	489	486	474	417	236	108	0.42 (0.31-0.56) <i>P</i> <0.001	0.45 (0.33-0.60) <i>P</i> <0.001
	Cumulative Incidence (%)		0.2	0.8	3.8	9.3	11.9		
Non-HLP	No. at risk	2,137	2,044	1,838	1,410	676	257	1	1
	Cumulative Incidence (%)		1.7	7.7	12.6	20.8	25.6		

Supplementary Figure 4. Continued