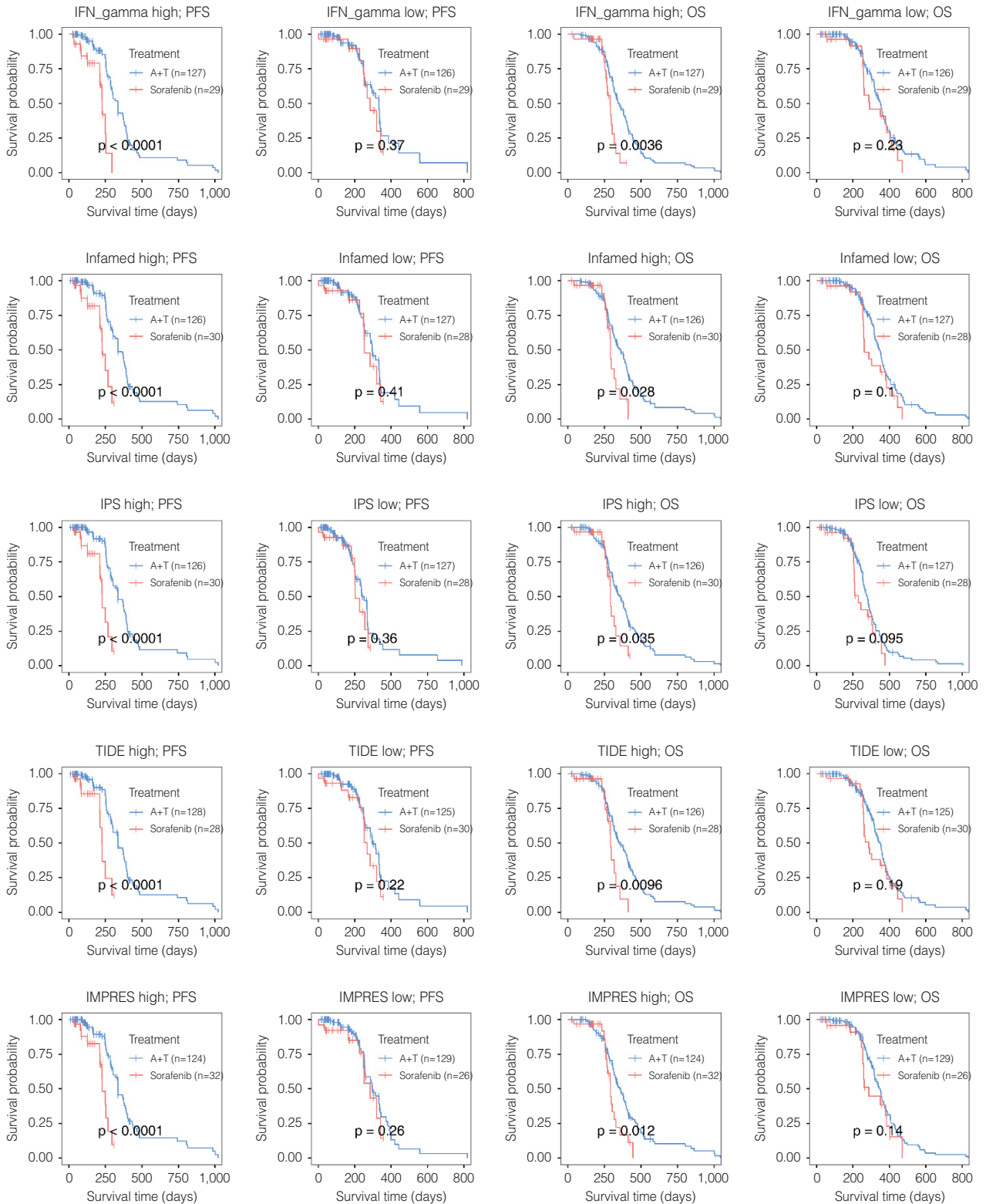
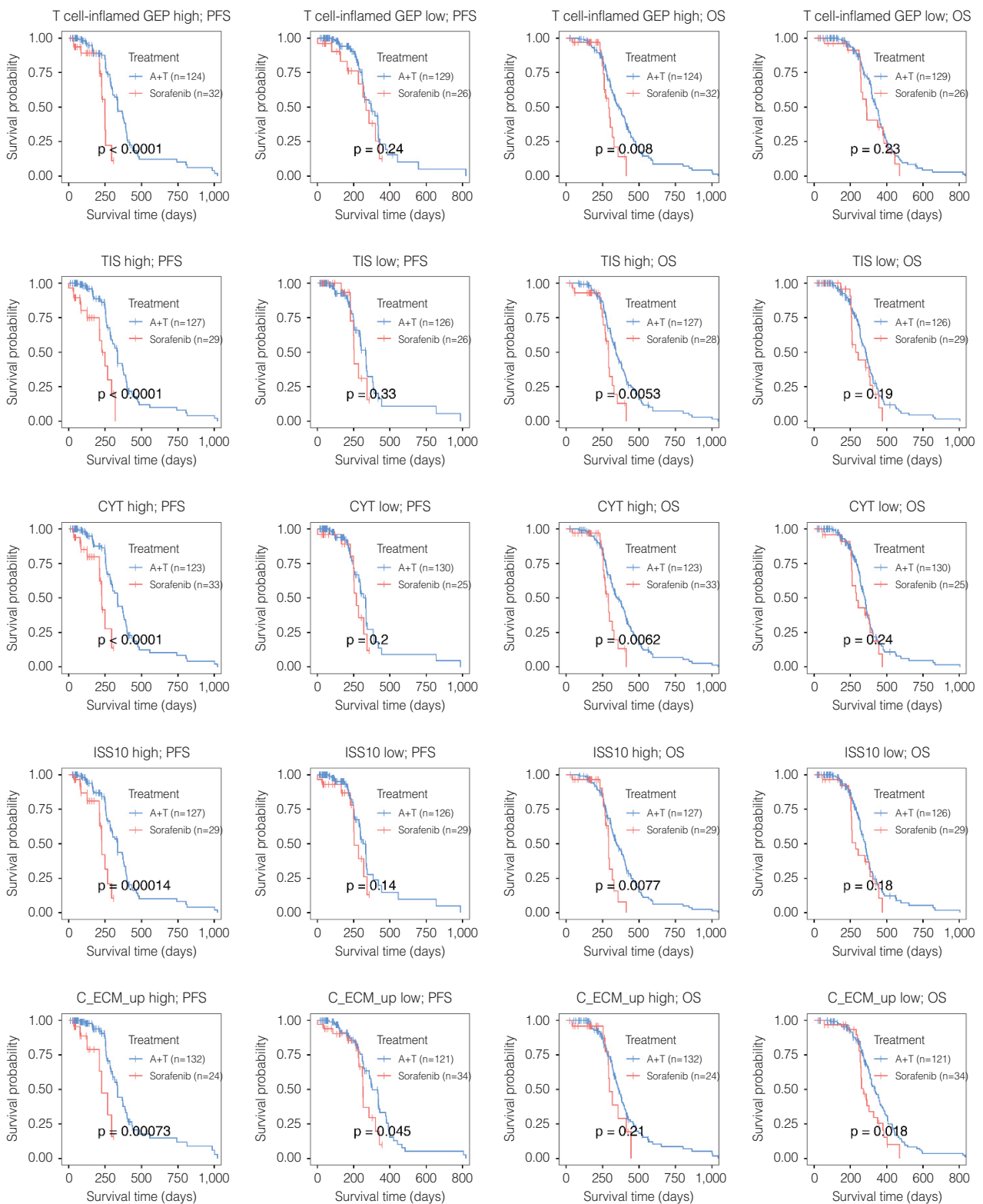


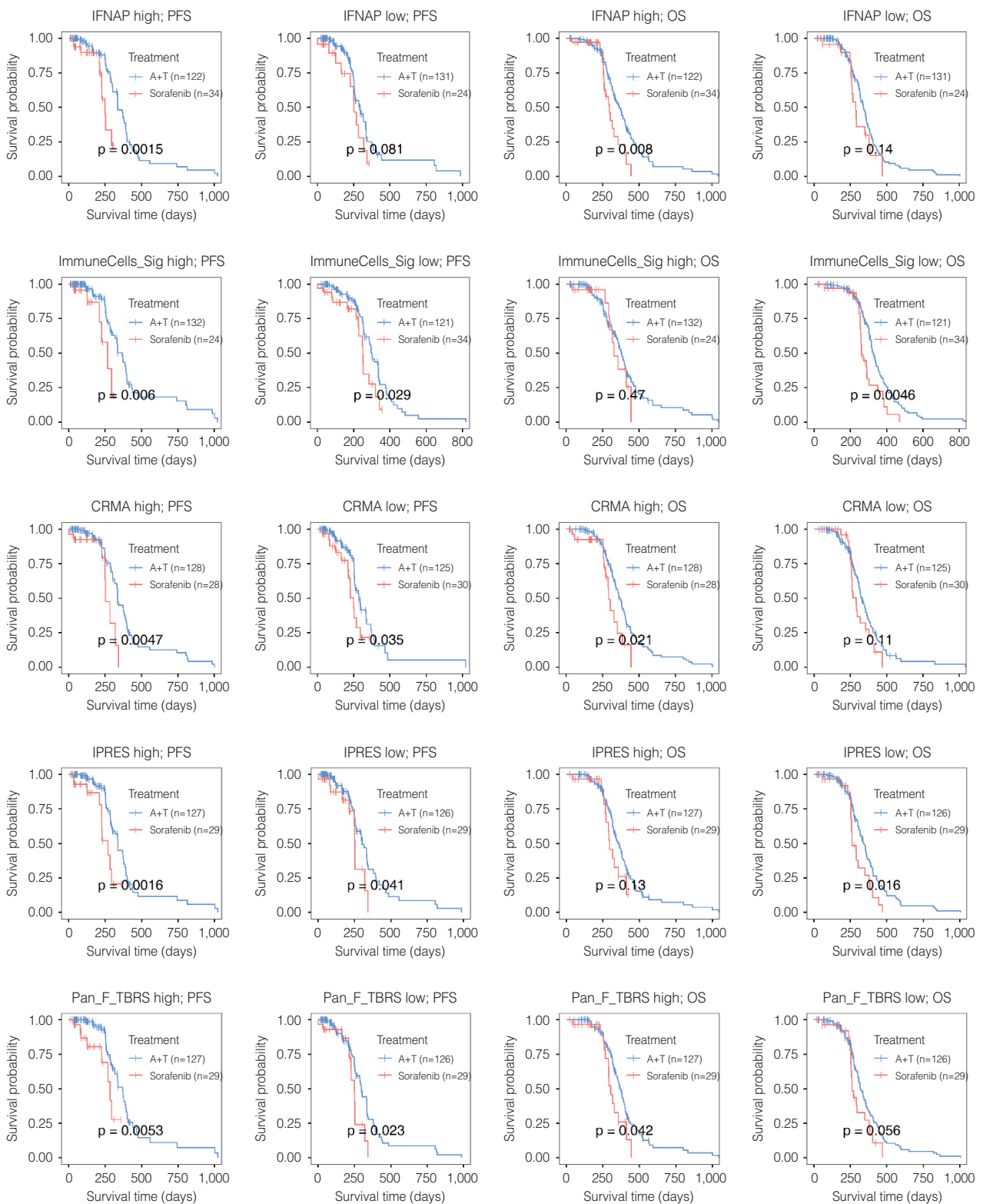
Supplementary Figure 3. Kaplan–Meier plots comparing progression-free survival (PFS) and overall survival (OS) of patients treated with Atezolizumab plus Bevacizumab combination therapy versus sorafenib. The comparisons are based on high and low signature scores of the 23 curated immunotherapy response predictive signatures, divided by the median. The signatures are ordered in the same sequence as in Figure 1C.



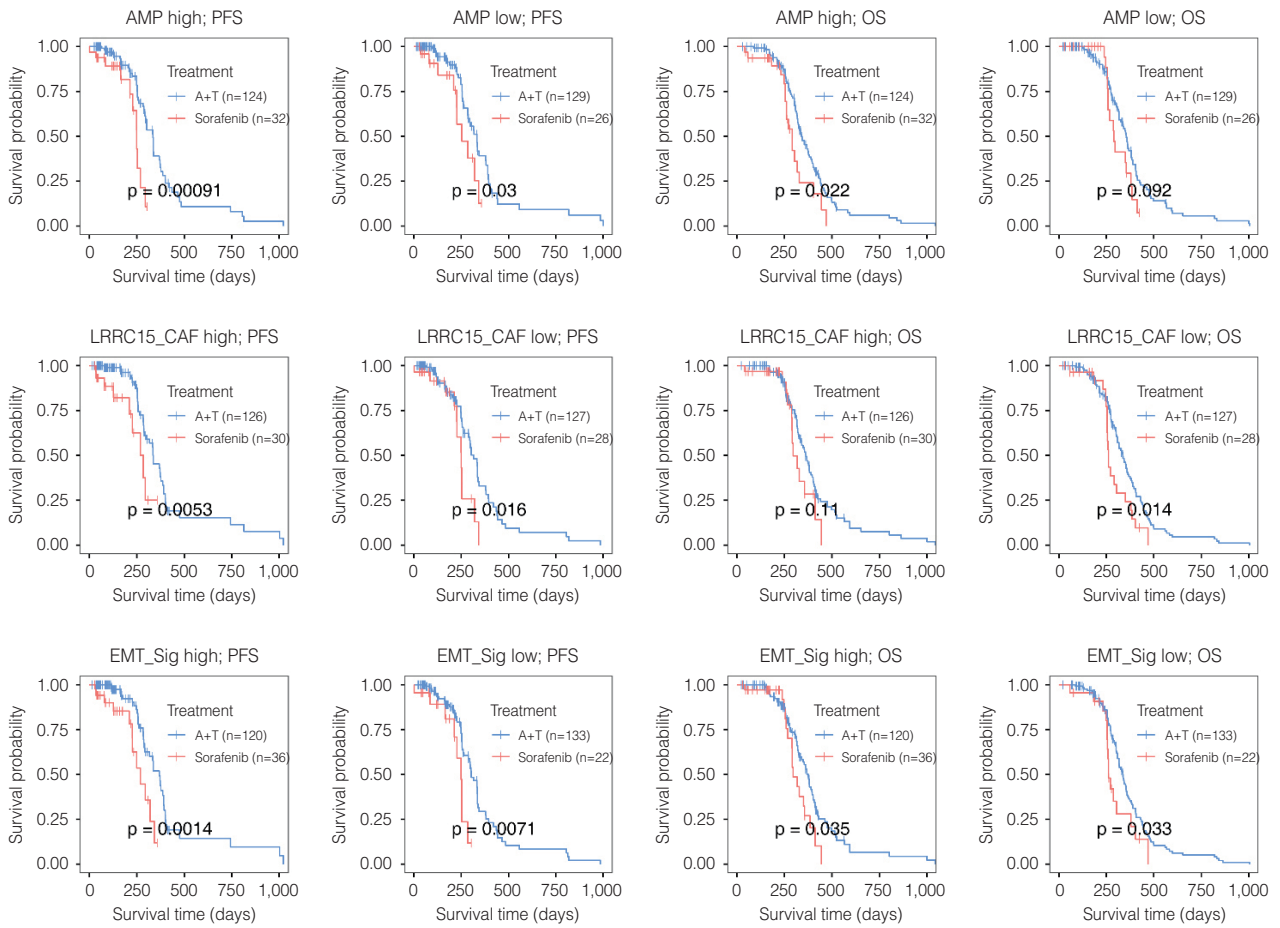
Supplementary Figure 3. Continued



Supplementary Figure 3. Continued



Supplementary Figure 3. Continued



Supplementary Figure 3. Continued